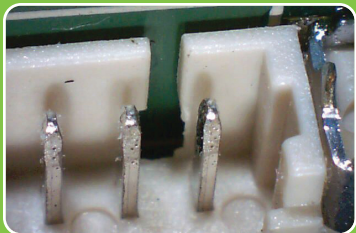


# Say hello to the smallest way to see the big picture.

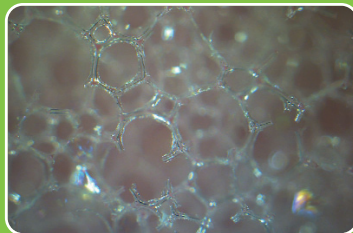
Taking a closer look at your manufacturing business is easier than ever before with the MiScope® – the handheld digital microscope. Whether you want to improve your quality control systems or create more dynamic presentations, the MiScope and MiScope Megapixel both feature a portable suite of tools and accessories that gives anyone the power to capture, manage, label, present and view images or videos large and detailed on a computer screen. Both fit right in the palm of your hand and are powered from your laptop computer.



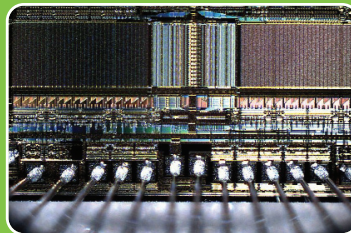
Just place the MiScope on top of an object and view it on your laptop or desktop computer screen. Easily slide lever to adjust zoom and focus.



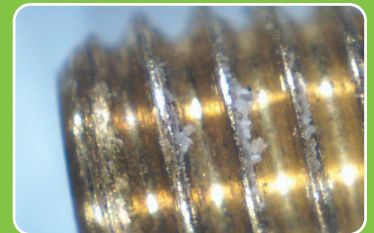
Connector, MiScope, 40x



Open cell foam, MiScope Megapixel, 40x



Memory chip, MiScope Megapixel, 140x



Screw threads, MiScope, 140x

## Manufacturing applications:

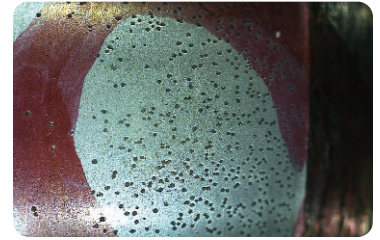
- ▶ Quick and easy quality inspection in the manufacturing facility
- ▶ Dynamic sales or trade show presentation tool
- ▶ Employee training

# Choose the MiScope that's perfect for your manufacturing needs.

Depending on the image size and resolution quality you need, the MiScope and MiScope Megapixel both have a range of optional tools and accessories. Video ToolBox imaging software is included with both, enabling you to view live images on your computer screen and capture still pictures or movies which can be emailed or later displayed on a computer projector.



Metal surface, MiScope Megapixel IR, 40x



Powertrain, MiScope Megapixel, 12x

## MiScope®

### FEATURES

#MISC

- ▶ View live and capture images on the computer screen (or use a computer projector for large groups)
- ▶ 40-140x magnification
- ▶ Completely portable with a laptop computer
- ▶ Save still images, movies and time lapse
- ▶ Labels, markers, time stamps, measurement
- ▶ Draw directly on the live image
- ▶ Includes Video ToolBox Software
- ▶ Add optional IR or UV illumination functionality
- ▶ Add optional filter set
- ▶ Supports touch-screen and tablet PCs

### SPECIFICATIONS

- Image sensor: 1/4" CMOS
- Pixels: 640 x 480
- Frame rate: 15 frames/second (up to 30 frames/second at reduced resolution)
- Power: USB port
- Light source: super-bright white LEDs
- Field of view: @40x: 7.5 x 10 mm @140x: 1.8 x 2.5 mm
- Resolution: 4 microns

### COMPUTER REQUIREMENTS

**Minimum system requirements:** Pentium III 500 MHz or faster, Windows 2000/ME/XP/VISTA, Internet Explorer 5.0 (or later), DirectX 8.1 or greater, USB 1.1 Port, 256 MB of Free Memory, Video card with 16 MB of video RAM, minimum 800 x 600 resolution at 16-bit color (contact Zarbeco for recommended system requirements). **MAC Software optional:** G3 400 MHz or faster, Mac OS X 10.3.5 or greater, USB 1.1 Port, 128 MB of RAM, minimum 800 x 600 screen resolution.

## MiScope® Megapixel

### FEATURES

#MISC-MP

- ▶ View live and capture images on the computer screen (or use a computer projector for large groups)
- ▶ 12-140x magnification
- ▶ Completely portable with a laptop computer
- ▶ Save still images, movies and time lapse
- ▶ Labels, markers, time stamps, measurement, picture-in-picture
- ▶ Draw directly on the live image
- ▶ **Includes upgraded Video ToolBox PRO Software with enhanced measurement tools**
- ▶ Includes stacking shims for magnification adjustment
- ▶ Add optional IR or UV illumination functionality
- ▶ Add optional filter set for IR fluorescence
- ▶ Supports touch-screen and tablet PCs

### SPECIFICATIONS

- Image sensor: 1/3" CMOS
- Pixels: 1280 x 1024
- Frame rate: 15 frames/second (up to 30 frames/second at reduced resolution)
- Power: USB 2.0 port
- Light source: super-bright white LEDs
- Field of view: @12x: 20.6 x 25.8 mm @40x: 8.1 x 10.1 mm @140x: 2.3 x 2.9 mm
- Resolution: 2.3 microns

### COMPUTER REQUIREMENTS

**Minimum system requirements:** Pentium IV 1.5 GHz or faster, Windows 2000/XP, Internet Explorer 5.0 (or later) installed, DirectX 8.1 or greater, USB 2.0 Port, 512 MB of Free Memory, Video card with 32 MB of video RAM, minimum 800 x 600 resolution at 16-bit color (contact Zarbeco for recommended system requirements).

## ACCESSORIES

For our complete line of accessories and tools that can enhance product performance and experience, please visit our website or contact us for more information today.



### ▶ FOR MiSCOPE

**MiScope Adapter Lens with Stand**  
Portable stand with removable lens, increases field of view and lowers magnification to 6x. #MISCstand



### ▶ FOR MiSCOPE MEGAPIXEL

**MiScope Megapixel Stand**  
Portable stand increases depth of field and allows hands-free magnification at 12x. #MPstand



### ▶ FOR BOTH MiSCOPE and MiSCOPE MEGAPIXEL

**PRO Kit**  
Includes a hard case with foam insert, light table, flashlight and Video ToolBox PRO software upgrade. Requires MISC-SW or higher. #M-PRO